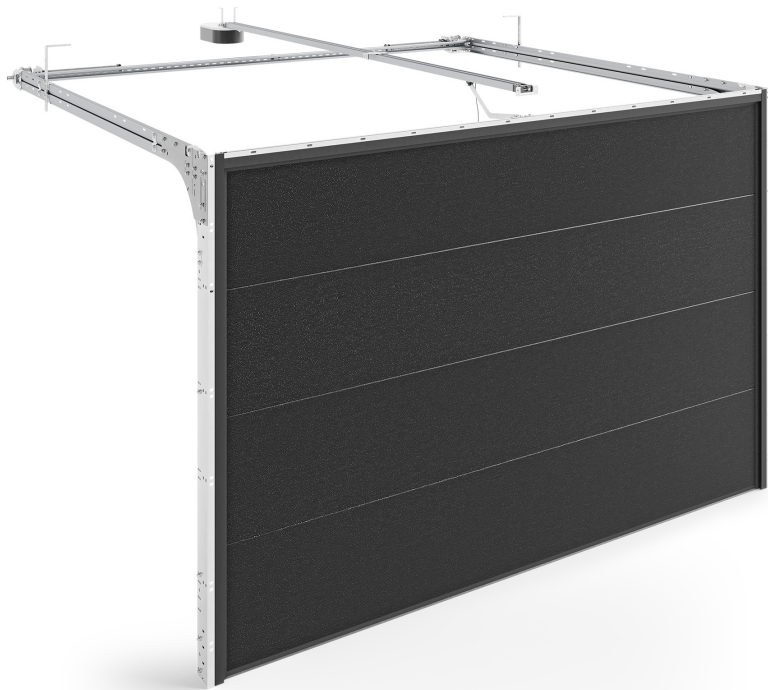


# INFINITI R – doors with torsion springs (rear)



- ✓ maximum weight: 165 kg
- ✓ minimum dimensions of jambs: 85 mm
- ✓ minimum lintel dimensions: 120 mm
- ✓ In the offer panels with a smooth outer surface, Woodgrain structure with low and high embossments (varnished according to RAL palette) or veneered
- ✓ torsion springs located in the rear part of the gate allow it to be mounted to the garage opening with a lower lintel

**5,5 m**

maximum width

**3 m**

maximum height

**12,5 m<sup>2</sup>**

maximum size

INFINITI gates in the R system have a reliable fastening and security system. They are equipped with anti-corrosion solutions that significantly extend their service life and guarantee the good appearance of the product for years. The R system uses durable torsion springs placed at the rear. Choosing this offer means that you receive a pre-assembled set, installation is quick and uncomplicated, and subsequent use is very convenient.

All fittings and upper handles with rollers in gates with springs are galvanized as standard (silver colour). They can be painted in white RAL 9016.

**GARAGE DOOR**

**TORSION SPRINGS**

**ALUMINUM**